

### PRODUCT DESCRIPTION

The panel blind is an innovative shading solution for larger windows and patio doors that look fabulous in both contemporary and traditional interior design schemes, and can be used as a stylish room divider. The wide panels can reflect and filter daylight effectively and control light, glare and privacy in both domestic and commercial installations.

When open, the panels stack neatly behind one another allowing maximum light into the room. Sliding the panels into the closed position creates a complete fabric screen providing light control and increased privacy.

### HEADRAILS

Tracks are available in white with three, four or five channels. Panel sizes are available between 300mm to 1000mm and can be free floating or connected and can be stacked left, right, or split draw.

### CONTROLS

Blinds are supplied as standard with Wand control, with cord operation as an option.

### FABRIC/MATERIALS

Available in natural looking fabrics, screens, faux suedes and woodweaves, panel blinds will transform the look of any room with its cultured, sophisticated appearance.

Choose from a selection of fabrics from either the Roller Fabrics collection or from any of the Wood Weave finishes.

### FIXING

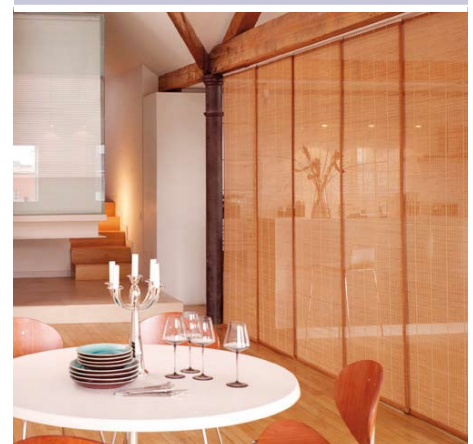
There is a range of different types of fixing brackets made from galvanised steel and providing secure, easy and quick mounting of the blind.

End brackets must be fixed 50mm to 75mm in from each end, with the remaining brackets spaced evenly between them. One fixing screw should be used in the centre hole of each bracket.

In a normal installation, there must be a 40mm clearance between the bracket and any obstructions i.e. a pelmet. However if the blind is a 4-track, split draw configuration only, the headrail must be turned through 180° and the brackets fixed 60mm from any obstruction.

### MAINTENANCE

For Wood Weave Panel Blinds, a light dusting or even vacuuming, will keep the blinds looking good. For Roller fabrics, a light dusting, or vacuuming on a low setting, or with a brush appliance, is all that is required.



### RECOMMENDATIONS

<b>Minimum Width Panel</b>	300mm
<b>Maximum Width Panel</b>	1000mm
<b>Maximum Drop</b>	5000mm

**DECLARATION OF QUALITY:** All products detailed in this literature are manufactured exclusively in our own factory. This allows complete control over quality and also enables delivery to be tailored and guaranteed for each individual project. We are constantly striving to improve the product and reserve the right to alter specifications without notice.