

[Perfect Fit]

Measuring, Assembly & Fitting Instructions

Measuring Instructions

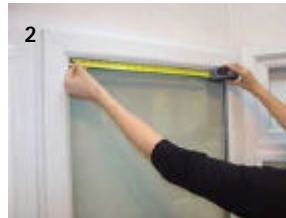
Step 1.

Before you begin, ensure there is a clearance of 6mm all around the outside of your window beading to allow enough room for the Perfect Fit (Fig.1).



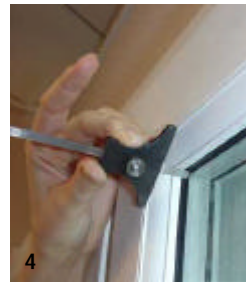
Step 2. Measure glass size

Measure the width and the drop of your glass size accurately with a digital measuring tape (P9480). We recommend that you measure in both corners and the middle of your window and use the smallest size taken (Fig. 2 & 3).



Step 3. Measure window depth

Measure the depth of the window (Fig. 4) using the depth gauge (P9481). This gives you the measurement from the face of the window frame to the glass (this is normally 20mm/24mm) and will determine the size of the window fixing brackets to be used.



Assembly Instructions

Step 4. Fitting to Corner Pieces

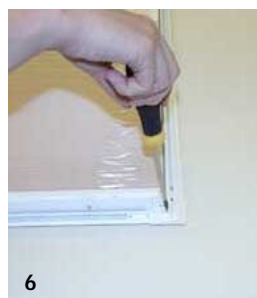
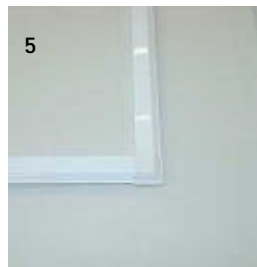
All Perfect Fit Frames are supplied with the blind built in place on the top frame or to the bottom frame if skylight or P1400 pleated options are selected.

The top, bottom and side frames will need to be assembled.

This is achieved by sliding the side frames on either side into the pre-fitted corner pieces of first the top and then the bottom frame. Securing at the back using the screws provided (Fig. 5 & 6).

If skylight or P1400 pleated options are selected the headrail will need to be clipped into the pre-fixed clips.

Your frame is now ready for installation



Fitting Instructions

Fitting the Perfect Fit Blind to the Window Frame

Step 5. Insert window fixing brackets (P4508/P4509)

For the correct spacing distance (85mm) place a credit card into the corner of the window (Fig. 7).

Line up the window fixing bracket at the base of the card (or top of the card depending upon which corner of the window you are working) and fit the bracket by pushing it between the glass and the rubber seal of the window (Fig. 8).

Using the credit card guarantees a perfect line up for each of the holes in your frame with each of the brackets (Fig. 9).

Fit any intermediate brackets accordingly.

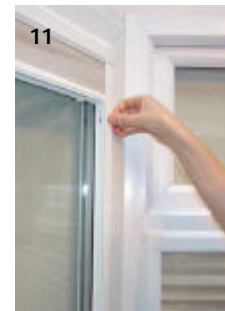


Step 6. Fix frame to window

Line up the holes in the frame with the window fixing brackets (Fig. 10).

Firmly press down the frame onto each bracket on one side at a time to ensure easier installation (Fig. 11).

Your blind is now installed.



Step 7. Window handles

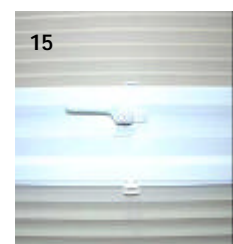
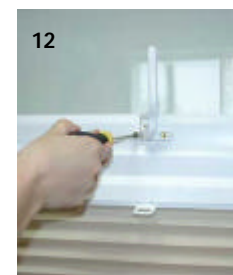
Blinds fitted to windows with handles may require packing pieces to be inserted between the framework and the handle. This is to stop the handle from touching the frame when operated. There are two different lengths available (P4250/P4252).

Lift the handle to an upright position and remove the screw caps (Fig. 12).

Unscrew the handle from the frame (Fig. 13)

Place the packing piece(s) in between the handle and the frame (Fig. 14).

Re-fit the handle (Fig. 15)



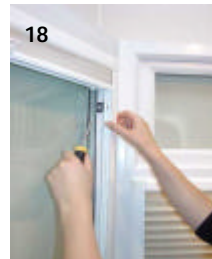
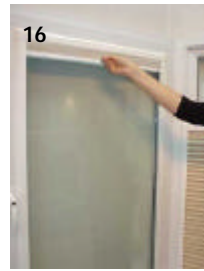
Perfect Fit removal

Step 8. Removal for cleaning purposes

To remove the frame from the window, raise the blind to a completely open position (Fig. 16).

Release the frame from each bracket by inserting a flat-headed screwdriver into the hole and depress against the lip of the bracket (Fig. 17).

Remove one side at a time to ensure easier removal (Fig. 18).



Perfect Fit with Venetian Blinds

Perfect Fit with Pleated Blinds

